

## BEERMATIC SingleTap CFD-AS61A-EU(UK)

### Beer Dispenser, Single Tap



#### ACCESSORIES INCLUDED

Platform

#### OPTIONAL EXTRAS

N/A

ITEM NUMBER: 66AZ-D136  
COUNTRY OF ORIGIN: JAPAN

Hoshizaki BEERMATIC SingleTap CFD-AS61A-EU(UK) is an automatic Draft Beer Dispenser with Foaming Mechanism. This dispenser has no built-in cooling system and is for connection to remote system. After initial freeze down 2 lt of beer can be served consecutively in 2 hours.

Hands-free portion control allows set quantity of chilled draft beer and beer head to be served by the push of a button. Beer is dispensed first, followed by beer head, which is poured from a separate spout. Thus, portion control can be very accurate, without spillage of beer and/or beer head.

- External cooling system 2 Draft beer can be served from ambient temperature kegs
- Hands-free portion control
- Manual pouring can be quickly implemented
- Dispensing rate 2 jugs per minute. A portion counter monitors the number of portions served
- Designed for high-volume outlets. After initial freeze down 2 lt of beer can be served consecutively in 2 hours
- Recovery time: 2 minutes. Quantity available after recovery time: 2 lt
- Manually raising or lowering the glass support base to the desired distance
- Folding or unfolding the spring-loaded base, beer can be served from the tap into two pre-set sizes
- Compatible with jugs of 2 mm or more in inside diameter and 2 mm or less in outside diameter.

#### WARRANTY PERIOD

**2 Years on Parts & Labour**

#### EXTERIOR

ABS front and side panels, bottom plate of galvanized steel

#### OPERATING CONDITIONS

Ambient temperature (minimum): 5 °C, Ambient temperature (maximum): 32 °C, Voltage range: ± 10%

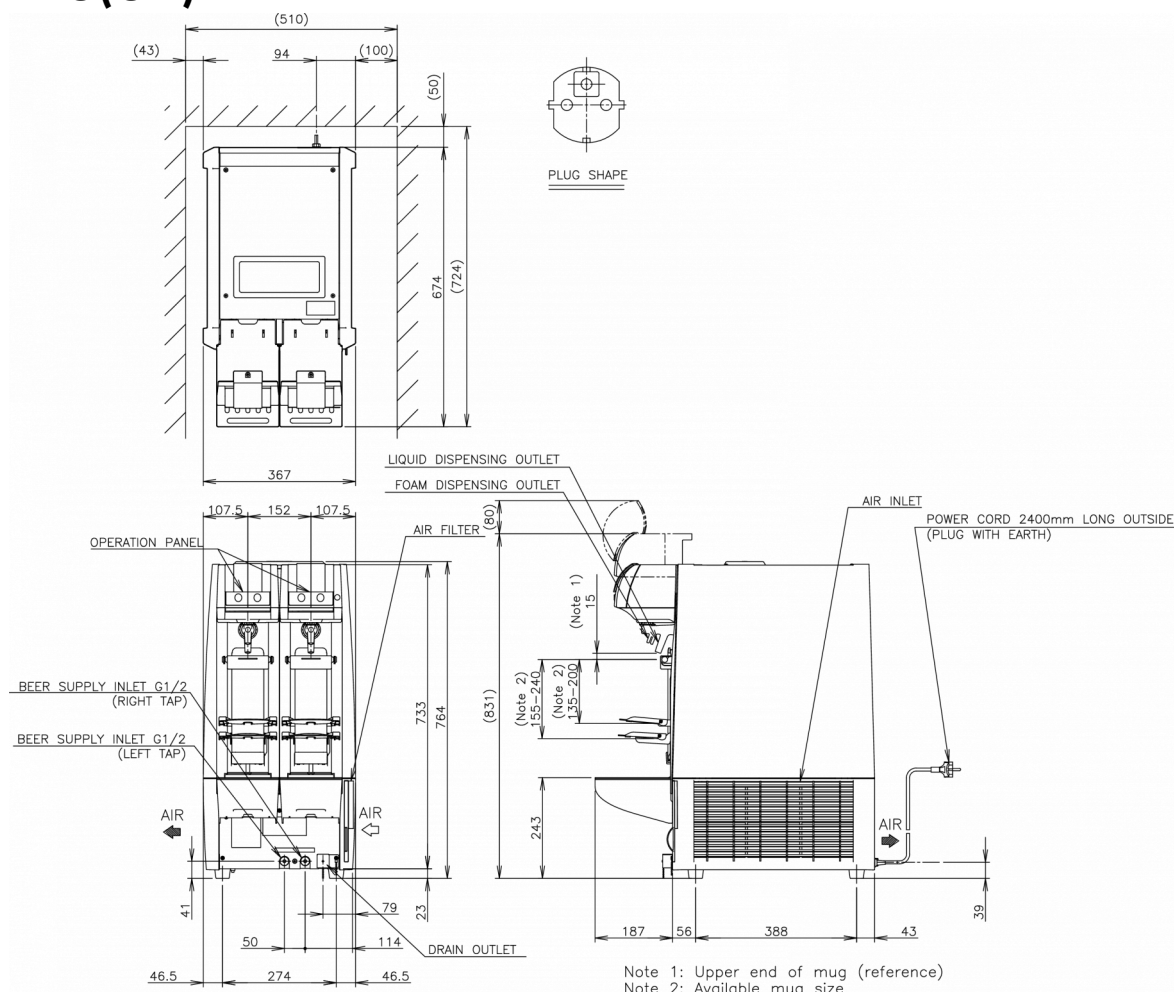
#### CERTIFICATIONS





# HOSHIZAKI

## BEERMATIC SingleTap CFD-AS61A-EU(UK)



### TECHNICAL SPECIFICATIONS

Cooling system	Power supply	Electrical circuit breaker protection
Air Cooled	1/220 - 240V/50Hz	2 A

### SHIPPING SPECIFICATIONS

Width (packed)	Depth (packed)	Height (packed)	Volume (packed)	Gross weight	Width	Depth	Height	Net weight
795 mm	335 mm	410 mm	0.109 m3	16 kg	170 mm	307 mm	520 mm	10.2 kg

Disclaimer: Every effort has been made to ensure that the information contained in this spec sheet is accurate at the time of publishing. Hoshizaki Europe BV assumes no responsibility or liability for typographical errors or omissions or for any misinterpretation of the information within the publication and reserves the right to change without notice.

Please observe: The draft beer dispenser is compatible with glasses of 9 mm or over in inside diameter and 9 mm or less in outside diameter. There must be a difference of 9 mm or over in height between a large size glass and a medium size glass. If you use glasses or tumblers of other sizes, please consult our installation manual. Available as special order unit.



Hoshizaki Belgium  
Hoshizaki Danmark  
Hoshizaki Deutschland  
Hoshizaki France  
Hoshizaki Iberia  
Hoshizaki Italia  
Hoshizaki Middle East

[info@hoshizaki.nl](mailto:info@hoshizaki.nl)  
[info@hoshizaki.dk](mailto:info@hoshizaki.dk)  
[vertrieb@hoshizaki.de](mailto:vertrieb@hoshizaki.de)  
[info@hoshizaki.fr](mailto:info@hoshizaki.fr)  
[info@hoshizaki.es](mailto:info@hoshizaki.es)  
[commerciale@hoshizaki.it](mailto:commerciale@hoshizaki.it)  
[sales.ex@hoshizaki-europe.com](mailto:sales.ex@hoshizaki-europe.com)

Hoshizaki Netherlands  
Hoshizaki Norge  
Hoshizaki Sverige  
Hoshizaki UK  
Export countries  
Other countries

[info@hoshizaki.nl](mailto:info@hoshizaki.nl)  
[salg@hoshizaki.no](mailto:salg@hoshizaki.no)  
[orderSE@hoshizaki.dk](mailto:orderSE@hoshizaki.dk)  
[uksales@hoshizaki.uk](mailto:uksales@hoshizaki.uk)  
[sales.ex@hoshizaki-europe.com](mailto:sales.ex@hoshizaki-europe.com)  
[sales.ex@hoshizaki-europe.com](mailto:sales.ex@hoshizaki-europe.com)

[www.hoshizaki-europe.com](http://www.hoshizaki-europe.com)