



# HOSHIZAKI

## DIM-40DE-HC

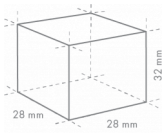
### Cube ice dispenser

Production Capacity (kg/24h) - AT 10°C, WT 10°C: 43

Storage bin capacity: 15 kg



ICE TYPE: Large cubes, Standard



Cube Size:  Large  
Weight: 23 g

#### ACCESSORIES INCLUDED

Installation kit, Mounting Brace (Wall Mounting)

#### OPTIONAL EXTRAS

Mounting brance (Floor mounting)

#### CORRESPONDING WATER FILTERS

4HC-H Single Water Filter, 4HC Replacement Cartridge

PRODUCT SERIES: DIM 40  
ITEM NUMBER: L024  
COUNTRY OF ORIGIN: UK

The DIM-40DE-HC produces cubed ice, in the most popular size of 28 x 28 x 32 mm, slow-melting and much appreciated for its maximum cooling and minimal drink dilution.

Freshly produced ice cubes remain well protected in the ice storage area from contaminants, dust and light, hence maintaining the highest quality. Cubes are dispensed automatically and hygienically by pressing the actuator button, conveniently located on the ice-dispensing panel. A dispense opening of over 20 mm allows for ample clearance for ice containers positioning. Ice cubes spillage is minimized by the large drain pan, for easy and problem-free ice dispensing.

This unit is manufactured with a new exterior design and finish, for easy cleaning. The elegant light grey color of the ice-dispense area greatly reduces the staining effect of water minerals. Ice cubes production and storage capacity is suitable for a wide range of applications, especially where self-service is preferable: hotel corridors, canteens & break-rooms, self-service areas, in combination with beverage and coffee vending, petrol stations and convenience stores. Last but not least, in the healthcare sector. The dispensing mechanism may be easily automated to work in conjunction with trending self-serve and operator assisted beverage vending. Quiet operation (< 45 dB) is ideal for hotel corridors and ice rooms.

- Natural refrigerant R290 Hydrocarbon.
- Louvered front access for condensing air circulation (front intake, back exhaust)
- Easily accessible and removable air filter
- Slim-line dimensions allow for ease of recessed or built-in installations
- Front panel positioned, recessed and protected On-Off switch
- Adjustable legs
- Safety: IEC Conform to the standard

#### WARRANTY PERIOD

**2 Years on Parts & Labour - based on country agreement**

#### EXTERIOR

Acrylic Baked Steel (Cabinet), ABS Molding (Front and Back Panel)

Refrigerant type: R290 / Refrigerant: 0.075 kg / CO2 equivalent: 0.225 kg

#### OPERATING CONDITIONS

Ambient temperature (minimum): 1 °C, Ambient temperature (maximum): 40 °C, Water supply pressure (minimum): 0.07 MPa (0.7 bar), Water supply pressure (maximum): 0.8 MPa (8 bar), Water supply temperature (minimum): 5 °C, Water supply temperature (maximum): 35 °C, Voltage range (Rated Voltage): ±6%/10%

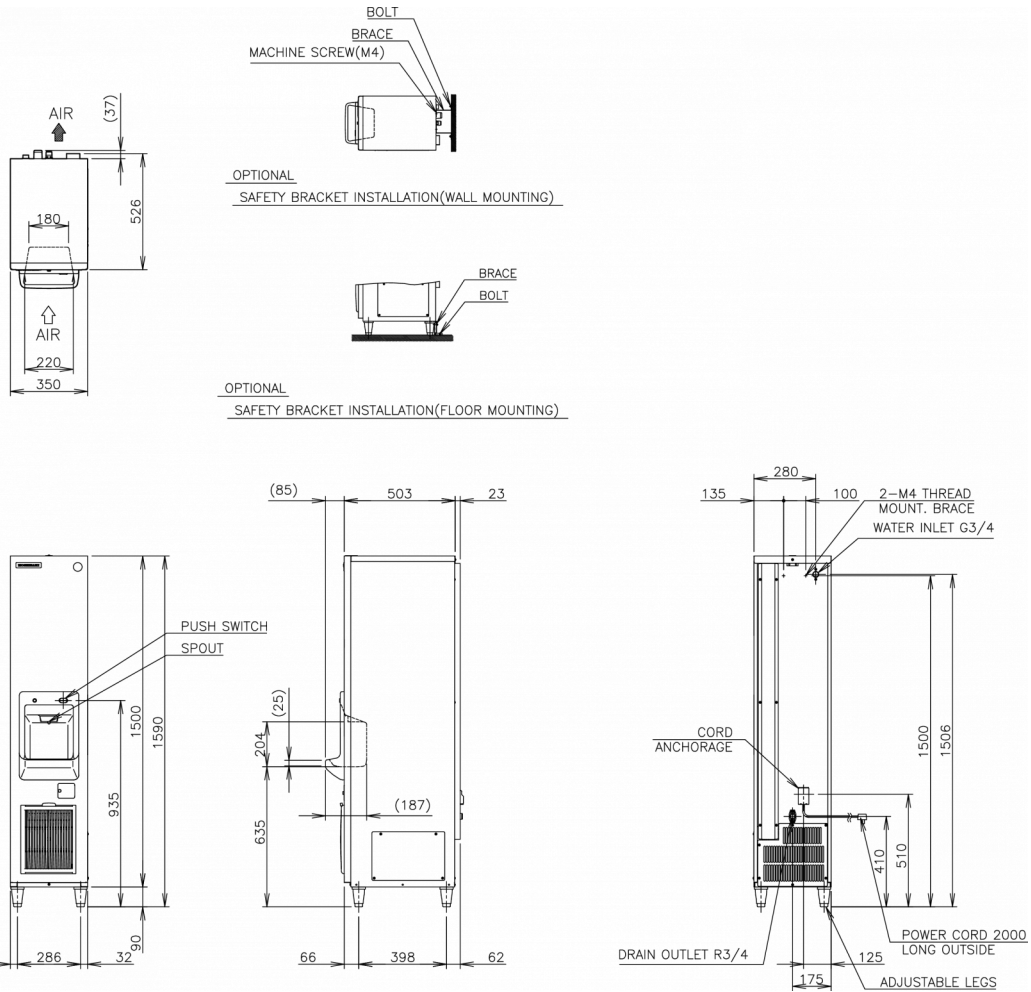
#### CERTIFICATIONS





# HOSHIZAKI

## DIM-40DE-HC



### TECHNICAL SPECIFICATIONS

Cooling system	Power supply	Electric Consumption	Electrical circuit breaker protection	Heat Rejection (AT 32°C, WT 21°C)	Production Capacity (kg/24h) - AT 10°C, WT 10°C	Production Capacity (kg/24h) - AT 21°C, WT 15°C	Production Capacity (kg/24h) - AT 32°C, WT 21°C	Water consumption (m3/24h) - AT 10°C, WT 10°C
Air Cooled	1/220 - 240V/50Hz	0.28 kW	5 A	0.71 kW	43	37	30	0.22

### SHIPPING SPECIFICATIONS

Width (packed)	Depth (packed)	Height (packed)	Volume (packed)	Gross weight	Width	Depth	Height	Height including legs (minimum)	Height including legs (maximum)	Net weight
450 mm	730 mm	1,666 mm	0.547 m3	70 kg	350 mm	526 mm	1,500 mm	1,590 mm	1,635 mm	59 kg

Disclaimer: Every effort has been made to ensure that the information contained in this spec sheet is accurate at the time of publishing. Hoshizaki Europe BV assumes no responsibility or liability for typographical errors or omissions or for any misinterpretation of the information within the publication and reserves the right to change without notice.



# HOSHIZAKI

Hoshizaki Belgium  
 Hoshizaki Danmark  
 Hoshizaki Deutschland  
 Hoshizaki France  
 Hoshizaki Iberia  
 Hoshizaki Italia  
 Hoshizaki Middle East

[info@hoshizaki.nl](mailto:info@hoshizaki.nl)  
[info@hoshizaki.dk](mailto:info@hoshizaki.dk)  
[vertrieb@hoshizaki.de](mailto:vertrieb@hoshizaki.de)  
[info@hoshizaki.fr](mailto:info@hoshizaki.fr)  
[info@hoshizaki.es](mailto:info@hoshizaki.es)  
[commerciale@hoshizaki.it](mailto:commerciale@hoshizaki.it)  
[sales.ex@hoshizaki-europe.com](mailto:sales.ex@hoshizaki-europe.com)

Hoshizaki Netherlands  
 Hoshizaki Norge  
 Hoshizaki Sverige  
 Hoshizaki UK  
 Export countries  
 Other countries

[info@hoshizaki.nl](mailto:info@hoshizaki.nl)  
[salg@hoshizaki.no](mailto:salg@hoshizaki.no)  
[orderSE@hoshizaki.dk](mailto:orderSE@hoshizaki.dk)  
[uksales@hoshizaki.uk](mailto:uksales@hoshizaki.uk)  
[sales.ex@hoshizaki-europe.com](mailto:sales.ex@hoshizaki-europe.com)  
[sales.ex@hoshizaki-europe.com](mailto:sales.ex@hoshizaki-europe.com)

[www.hoshizaki-europe.com](http://www.hoshizaki-europe.com)