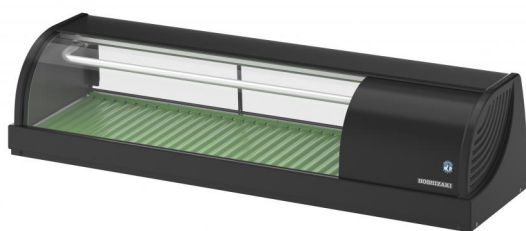




# HOSHIZAKI

## HNC-120BE-R-BLH

**Sushi display case with LED lighting,  
right-sided**



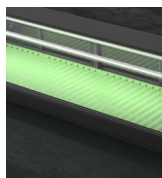
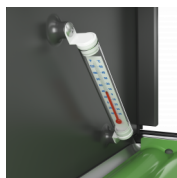
PRODUCT SERIES: SUSHI CASES

ITEM NUMBER: S052-C174

COUNTRY OF ORIGIN: JAPAN

This Hoshizaki HNC-120BE-L-BH is a Sushi Case with condenser unit on the right (right sided). It has a net volume of 42 ltr. and a cabinet width of 1200 mm. Equipped with a sliding door with 150 mm height towards the operator, LED lighting, thermometer and lightweight ABS trays.

- Self contained unit
- Refrigerated glass display
- Top glass angles down, allowing for plate space on top of units
- Antiscattering film on glass
- Smooth airflow, without forced air-circulation
- Condenser airflow is in the back and out the side
- Large condenser face improves cooling performance
- The tubular-shaped evaporator absorbs the heat continuously (no dripping)
- Solid food trays with radius groove to fit sushi foods
- The elevated side wings of the trays allow more air circulation
- Thermometer inside the cabinet
- The sliding door and the ABS trays are easily disassembled and removed for daily cleaning.
- Not intended to be used as a cooling storage cabinet.



### OPTIONAL EXTRAS

N/A

#### WARRANTY PERIOD

**2 Years on Parts & Labour -  
based on country agreement**

#### EXTERIOR

**Clear Glass, ABS Plastic,  
PVC Plastic**

Refrigerant type: R600a / Refrigerant: 0.032 kg / CO2 equivalent:  
0.096 kg

#### OPERATING CONDITIONS

Ambient temperature (minimum): 10 °C, Ambient temperature (maximum):  
30 °C, Voltage range: Rated Voltage  $\pm 6\%$

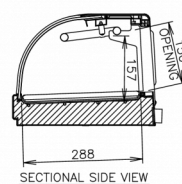
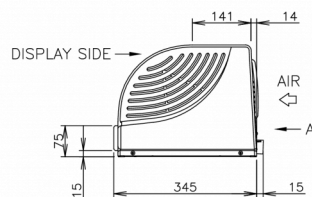
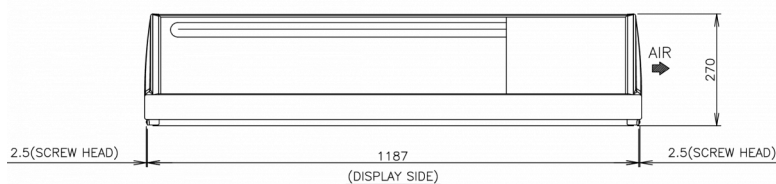
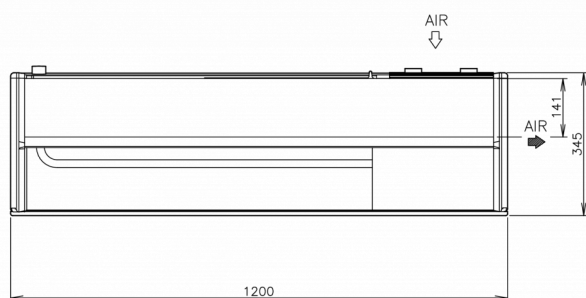
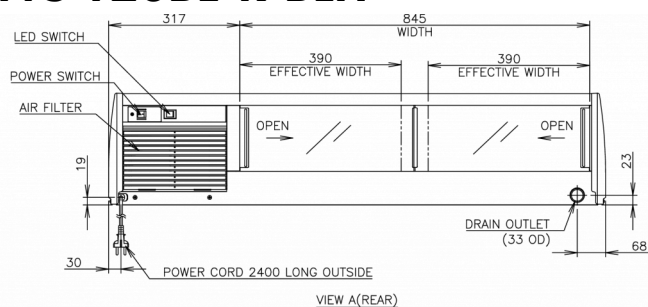
#### CERTIFICATIONS





# HOSHIZAKI

## HNC-120BE-R-BLH



### TECHNICAL SPECIFICATIONS

Cooling system	Power supply	Heat Rejection (AT 32°C, WT 21°C)
Built-in cooling system	1/220 - 240V/50Hz	0.41 kW

### SHIPPING SPECIFICATIONS

Width (packed)	Depth (packed)	Height (packed)	Volume (packed)	Gross weight	Width	Depth	Height	Net weight
1,280 mm	415 mm	517 mm	0.275 m3	44 kg	1,200 mm	345 mm	270 mm	32 kg

Disclaimer: Every effort has been made to ensure that the information contained in this spec sheet is accurate at the time of publishing. Hoshizaki Europe BV assumes no responsibility or liability for typographical errors or omissions or for any misinterpretation of the information within the publication and reserves the right to change without notice.

Please observe: Allow 10mm extra space at the installation site to meet any installation requirements (additional spacing is also required for proper air flow and pipe connections).



Hoshizaki Belgium  
Hoshizaki Danmark  
Hoshizaki Deutschland  
Hoshizaki France  
Hoshizaki Iberia  
Hoshizaki Italia  
Hoshizaki Middle East

[info@hoshizaki.nl](mailto:info@hoshizaki.nl)  
[info@hoshizaki.dk](mailto:info@hoshizaki.dk)  
[vertrieb@hoshizaki.de](mailto:vertrieb@hoshizaki.de)  
[info@hoshizaki.fr](mailto:info@hoshizaki.fr)  
[info@hoshizaki.es](mailto:info@hoshizaki.es)  
[commerciale@hoshizaki.it](mailto:commerciale@hoshizaki.it)  
[sales.ex@hoshizaki-europe.com](mailto:sales.ex@hoshizaki-europe.com)

Hoshizaki Netherlands  
Hoshizaki Norge  
Hoshizaki Sverige  
Hoshizaki UK  
Export countries  
Other countries  
[info@hoshizaki.nl](mailto:info@hoshizaki.nl)  
[salg@hoshizaki.no](mailto:salg@hoshizaki.no)  
[orderSE@hoshizaki.dk](mailto:orderSE@hoshizaki.dk)  
[uksales@hoshizaki.uk](mailto:uksales@hoshizaki.uk)  
[sales.ex@hoshizaki-europe.com](mailto:sales.ex@hoshizaki-europe.com)  
[sales.ex@hoshizaki-europe.com](mailto:sales.ex@hoshizaki-europe.com)  
[www.hoshizaki-europe.com](http://www.hoshizaki-europe.com)