

## DCM-60KE-P-HC

### Dispenser, Ice & Water with push button

Production Capacity (kg/24h) - AT 10°C, WT 10°C: 60

Storage bin capacity: 1.9 kg



ICE TYPE: Cubelet + Water

#### ACCESSORIES INCLUDED

Brush, Installation kit

#### OPTIONAL EXTRAS

N/A

#### CORRESPONDING WATER FILTERS

4HC-H Single Water Filter, 4HC Replacement Cartridge

ITEM NUMBER: L031

The DCM-60KE is an ice/water dispenser that can produce the following combinations: cubelet ice, cubelet ice and water or dispense only water. The ice/water dispensing system can be used for multiple environments including hospitality, catering, leisure and healthcare. They are compact with reduced space requirements. The portion control can be easily set, making it easy to regulate the consumption of ice among end-users, therefore ideal for a self-serving environment.

- Hoshizaki ice dispensers are more compact with reduced space requirements and in line with modern interiors.
- Ice dispensing system includes lever and LED operation buttons, easy and simple to use, therefore ideal for self-serving environment.
- New lever design prevents touching the lip of a glass, minimising risk of bacterial transfer.

#### WARRANTY PERIOD

**2 Years on Parts & Labour**

#### EXTERIOR

Stainless steel (Side, Rear), ABS molding (Front, Top, Drain pan)

Refrigerant type: R290 / Refrigerant: 0.085 kg / CO2 equivalent: 0.255 kg

#### OPERATING CONDITIONS

Ambient temperature (minimum): 5 °C, Ambient temperature (maximum): 40 °C, Water supply pressure (minimum): 0,05MPa (0,5bar), Water supply pressure (maximum): 0,78MPa (7,8bar), Water supply temperature (minimum): 5 °C, Water supply temperature (maximum): 35 °C, Voltage range: Rated Voltage  $\pm 6\%$

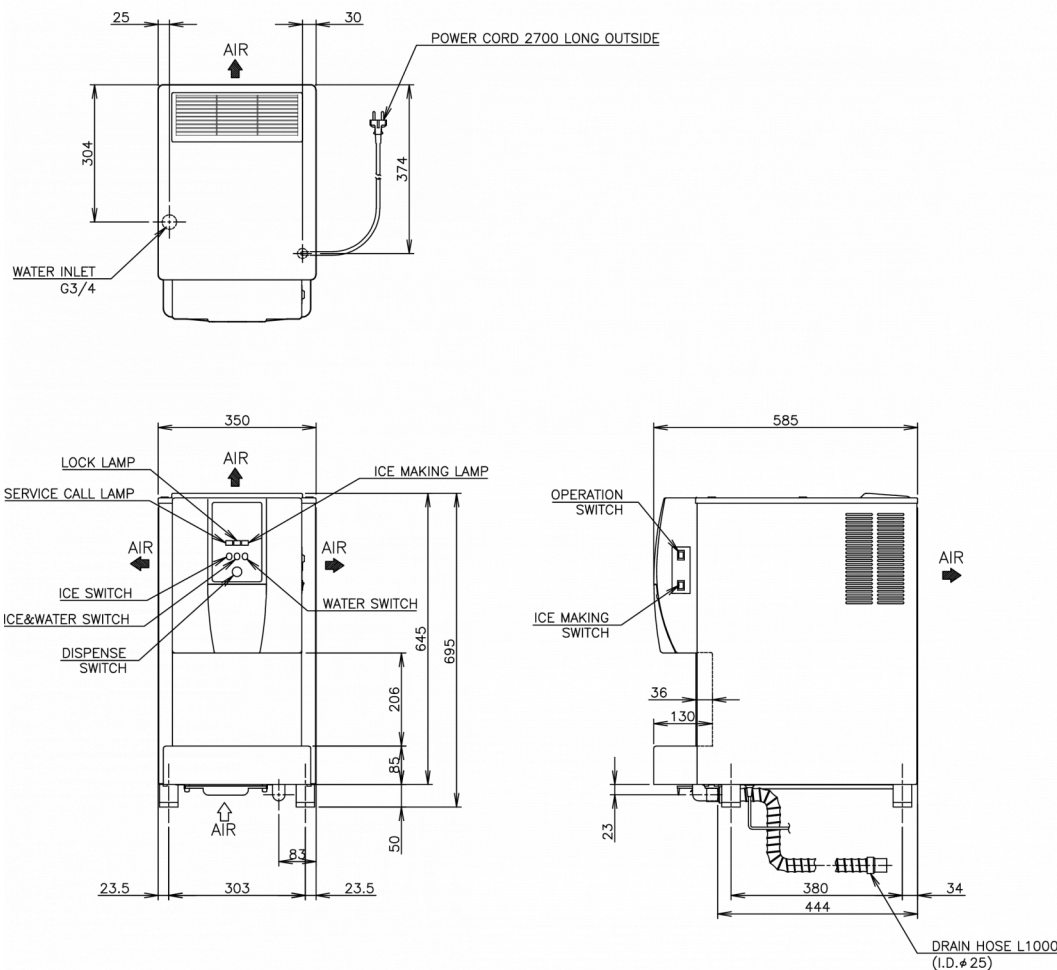
#### CERTIFICATIONS





# HOSHIZAKI

## DCM-60KE-P-HC



### TECHNICAL SPECIFICATIONS

Cooling system	Power supply	Electric Consumption	Electrical circuit breaker protection	Heat Rejection (AT 32°C, WT 21°C)	Production Capacity (kg/24h) - AT 10°C, WT 10°C	Production Capacity (kg/24h) - AT 21°C, WT 15°C	Production Capacity (kg/24h) - AT 32°C, WT 21°C	Water consumption (m3/24h) - AT 10°C, WT 10°C
Air Cooled	1/220 - 240V/50Hz	0.265 kW	10 A	0.45 kW	60	50	38	0.06

### SHIPPING SPECIFICATIONS

Width (packed)	Depth (packed)	Height (packed)	Volume (packed)	Gross weight	Width	Depth	Height including legs (minimum)	Height including legs (maximum)	Net weight
440 mm	655 mm	906 mm	0.261 m3	55 kg	350 mm	585 mm	695 mm	710 mm	46 kg

Disclaimer: Every effort has been made to ensure that the information contained in this spec sheet is accurate at the time of publishing. Hoshizaki Europe BV assumes no responsibility or liability for typographical errors or omissions or for any misinterpretation of the information within the publication and reserves the right to change without notice.



# HOSHIZAKI

Hoshizaki Middle East

[sales.ex@hoshizaki-europe.com](mailto:sales.ex@hoshizaki-europe.com)

[www.hoshizaki-europe.com](http://www.hoshizaki-europe.com)