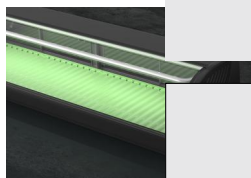
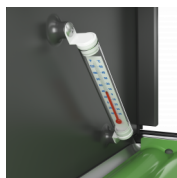
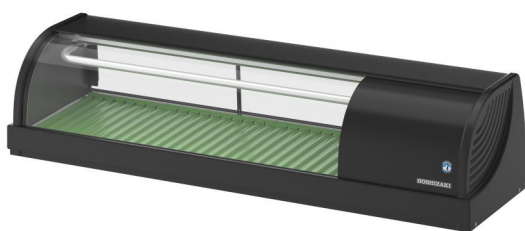


HNC-120BE-R-BLH

Sushi display case with LED lighting, right-sided

PRODUCT SERIES: HNC, SUSHI CASES
ITEM NUMBER: S052-C174

This sushi case is made for the delicate way that sushi and its fresh ingredients are supposed to be handled. The eye-catching rounded glass window makes it an attractive display of the fresh ingredients that are used. The cooling system gives it the qualitative support that sushi requires, protecting the integrity but it is not intended to be used as a cooling storage cabinet. Food plates can be turned upside down and used to improve cooling performance. This model is also available in different sizes, in black and stainless steel with either left or right-handed side openings. With anti-scattering film for glass splinter protection.

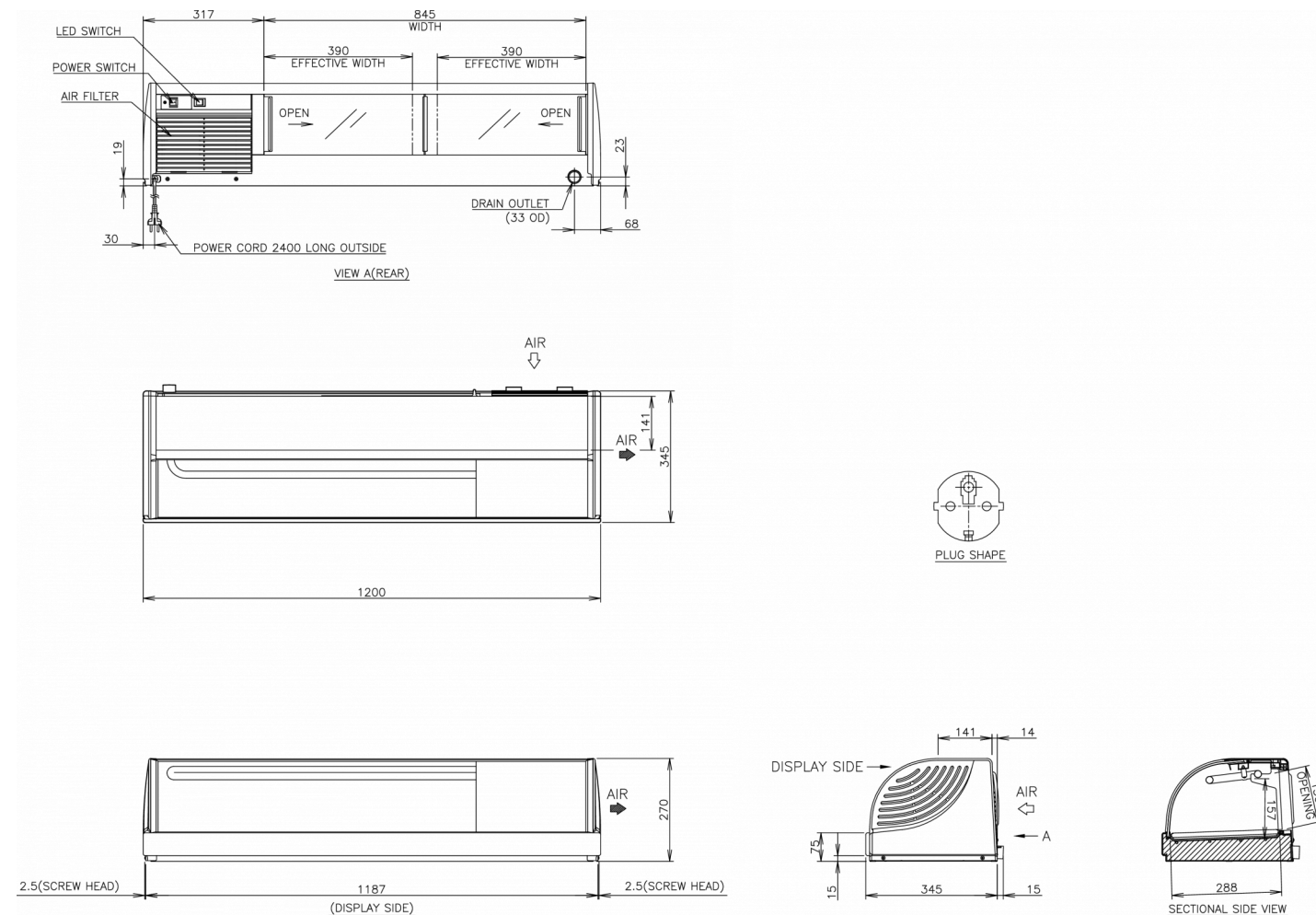


Refrigerant type: R600a / Refrigerant: 0.032 kg

CERTIFICATIONS



HNC-120BE-R-BLH



TECHNICAL SPECIFICATIONS

Power supply
1/220 - 240V/50Hz

SHIPPING SPECIFICATIONS

Gross weight	Width	Depth	Height	Net weight
44 kg	1,200 mm	345 mm	270 mm	32 kg