



# HOSHIZAKI

## DCM-60KE-P-HC (UK)

### Dispenser, Ice & Water with push button

Production Capacity (kg/24h) - AT 10°C, WT 10°C: 60

Storage bin capacity: 1.9 kg



ICE TYPE: Cubelet + Water

#### OPTIONAL EXTRAS

N/A

PRODUCT SERIES: DSM  
ITEM NUMBER: L031-C101  
COUNTRY OF ORIGIN: UK

Hoshizaki DCM-60KE-P-HC is an ice/water dispenser producing up to 60 kg of cubelet ice per 24 hours. It can produce the following combinations: cubelet ice, cubelet ice and water or dispense only water.

- Ice dispensing system includes push buttons and LED operation buttons
- Portion control by dispense switch
- Ideal for self-serving environment
- Ice making water control by float switch and water valve
- Also available with lever design as alternative to push button

#### WARRANTY PERIOD

**2 Years on Parts & Labour**

#### EXTERIOR

Stainless steel (Side, Rear), ABS molding (Front, Top, Drain pan)

Refrigerant type: R290 / Refrigerant: 0.085 kg / CO2 equivalent: 0.255 kg

#### OPERATING CONDITIONS

Ambient temperature (minimum): 5 °C, Ambient temperature (maximum): 40 °C, Water supply pressure (minimum): 0.05MPa (0.5bar), Water supply pressure (maximum): 0.78MPa (7.8bar), Water supply temperature (minimum): 5 °C, Water supply temperature (maximum): 35 °C, Voltage range: Rated Voltage  $\pm 6\%$

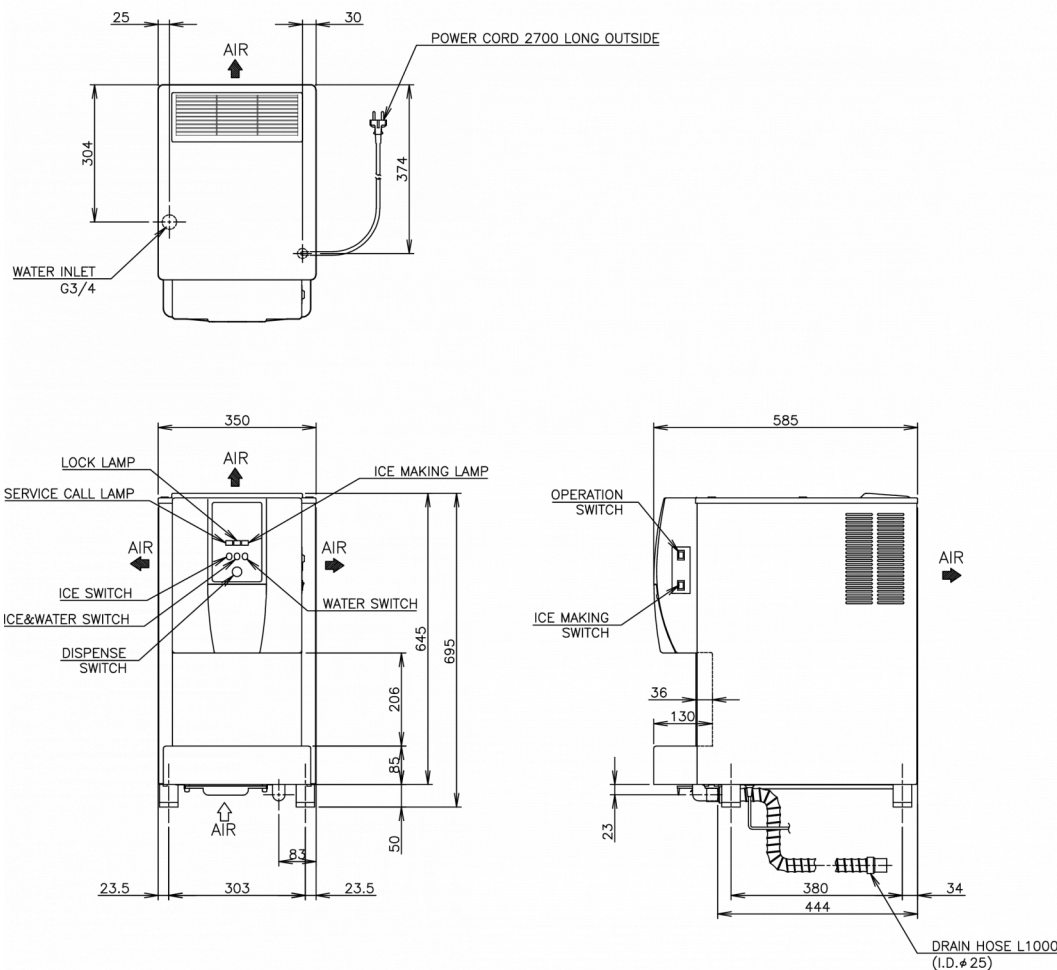
#### CERTIFICATIONS





# HOSHIZAKI

## DCM-60KE-P-HC (UK)



### TECHNICAL SPECIFICATIONS

Cooling system	Power supply	Electric Consumption	Electrical circuit breaker protection	Heat Rejection (AT 32°C, WT 21°C)	Production Capacity (kg/24h) - AT 10°C, WT 10°C	Production Capacity (kg/24h) - AT 21°C, WT 15°C	Production Capacity (kg/24h) - AT 32°C, WT 21°C	Water consumption (m3/24h) - AT 10°C, WT 10°C
Air Cooled	1/220 - 240V/50Hz	0.265 kW	10 A	0.45 kW	60	50	38	0.06

### SHIPPING SPECIFICATIONS

Width (packed)	Depth (packed)	Height (packed)	Gross weight	Width	Depth	Height including legs (minimum)	Height including legs (maximum)	Net weight	Volume (packed)
440 mm	655 mm	906 mm	55 kg	350 mm	585 mm	695 mm	710 mm	46 kg	0.261 l

Disclaimer: Every effort has been made to ensure that the information contained in this spec sheet is accurate at the time of publishing. Hoshizaki Europe BV assumes no responsibility or liability for typographical errors or omissions or for any misinterpretation of the information within the publication and reserves the right to change without notice.

Please observe: Also available with lever arm as alternative to push button design (DCM-60KE-HC)



# HOSHIZAKI

Hoshizaki Belgium  
Hoshizaki Danmark  
Hoshizaki Deutschland  
Hoshizaki France  
Hoshizaki Iberia  
Hoshizaki Italia  
Hoshizaki Middle East

[info@hoshizaki.nl](mailto:info@hoshizaki.nl)  
[info@hoshizaki.dk](mailto:info@hoshizaki.dk)  
[vertrieb@hoshizaki.de](mailto:vertrieb@hoshizaki.de)  
[info@hoshizaki.fr](mailto:info@hoshizaki.fr)  
[info@hoshizaki.es](mailto:info@hoshizaki.es)  
[commerciale@hoshizaki.it](mailto:commerciale@hoshizaki.it)  
[sales.ex@hoshizaki-europe.com](mailto:sales.ex@hoshizaki-europe.com)

Hoshizaki Netherlands  
Hoshizaki Norge  
Hoshizaki Sverige  
Hoshizaki UK  
Export countries  
Other countries

[info@hoshizaki.nl](mailto:info@hoshizaki.nl)  
[salg@hoshizaki.no](mailto:salg@hoshizaki.no)  
[orderSE@hoshizaki.dk](mailto:orderSE@hoshizaki.dk)  
[uksales@hoshizaki.uk](mailto:uksales@hoshizaki.uk)  
[sales.ex@hoshizaki-europe.com](mailto:sales.ex@hoshizaki-europe.com)  
[sales.ex@hoshizaki-europe.com](mailto:sales.ex@hoshizaki-europe.com)

[www.hoshizaki.uk](http://www.hoshizaki.uk)